

SP4000

ELECTROMECHANICAL AUTOMATION FOR RACK SLIDING GATES



• SMART TECHNOLOGY.

→ Hydrodynamic joint for smooth gate starts and stops.

• SAFE USE.

→ The strength and compactness of the structure guarantee the maximum reliability of operation over time.

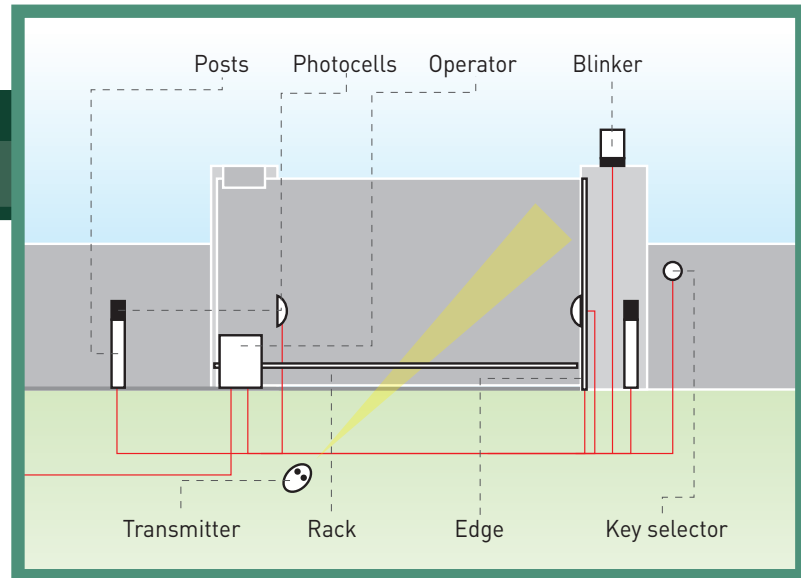
→ The operator makes it possible to automate any type of gate, even the heaviest.

CODE	DESCRIPTION	VOLTAGE	LEAF WEIGHT
P925169 00001	SP4000	400 V three-phase	up to 8800 lbs (~4000 Kg)
P925169 00002	SP4000 230V	230 V three-phase	up to 8800 lbs (~4000 Kg)

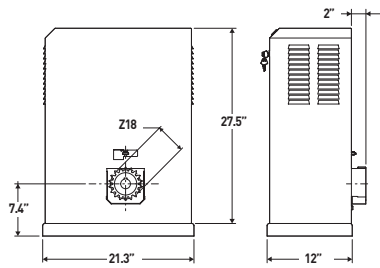
TECHNICAL FEATURES

SP4000

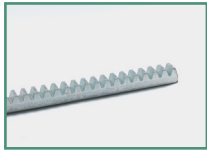
CONTROL PANEL	SIRIO TEL (incorporated)
REVERSIBLE/IRREVERSIBLE OPERATOR	irreversible
POWER SUPPLY	120 V- ± 10%, 50 Hz three-phase
ABSORBED POWER	2 hp (1500 W)
THERMAL PROTECTION	overload cutout inside the control panel
LEAF SPEED	32'/min
OUTPUT REVOLUTIONS	30 min
PINION PITCH	6 (18 teeth)
TYPE OF LIMIT SWITCHES	electromechanical
MANUAL RELEASE	mechanical release with knob
OPERATING CYCLE	very intensive use
ENVIRONMENTAL CONDITIONS	from 5°F (-15°C) to 140°F (+60°C)
DEGREE OF PROTECTION	IP 24
OPERATOR WEIGHT	187 lbs (~85 kg)
DIMENSIONS	see drawing



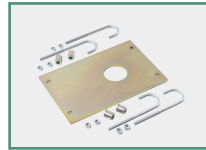
DIMENSIONS



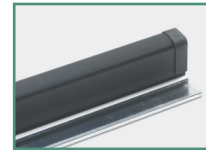
ACCESSORIES



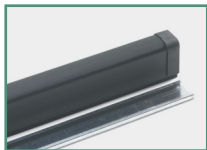
D571491 - CFZ6
30x30 6-pitch rack. 2 m lengths..



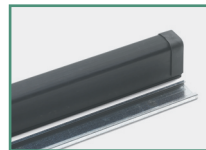
P125001 - BASP
Adjustable anchoring base.



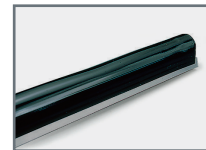
N190039 - CSP 10
Shock absorber profile, length 39".



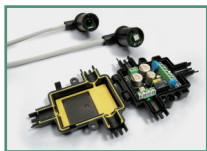
N190040 - CSP 20
Shock absorber profile, length 78".



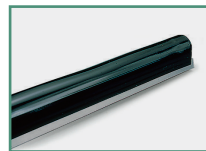
N190041 - CSP 25
Shock absorber profile, length 98".



N190105 - BAR C
Rubber safety edge with double profile.



P111401 00001 - VENTIMIGLIA NS
Infrared obstacle detection device for BIR C safety edge compliant with standard EN 12978.



N190104 - BIR C
Rubber safety edge.